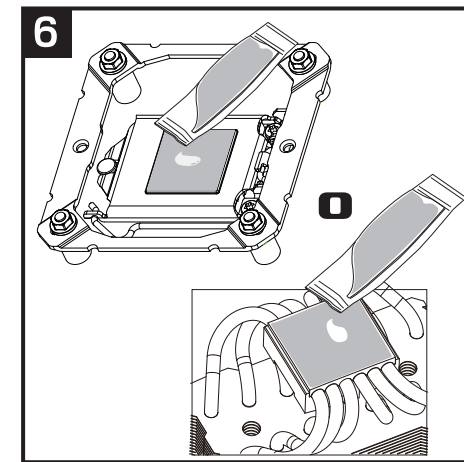
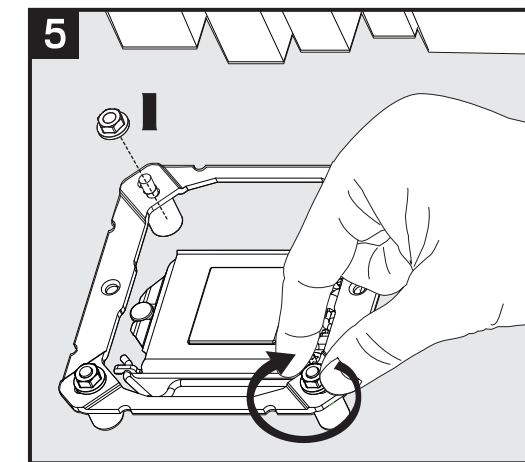
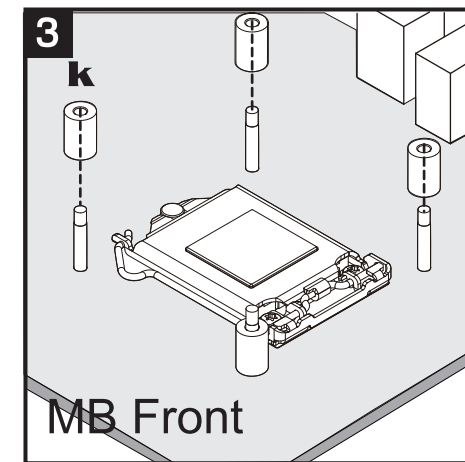
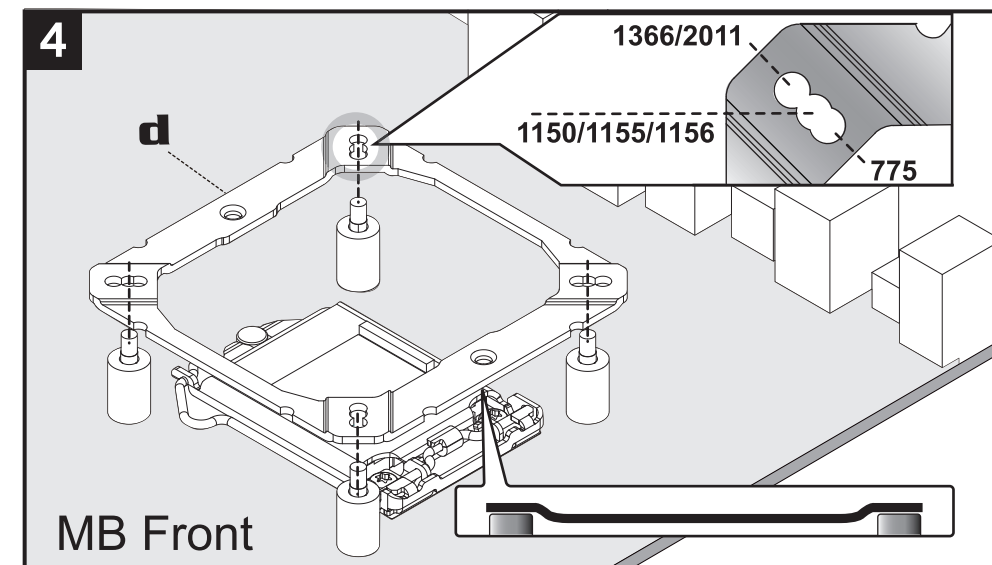
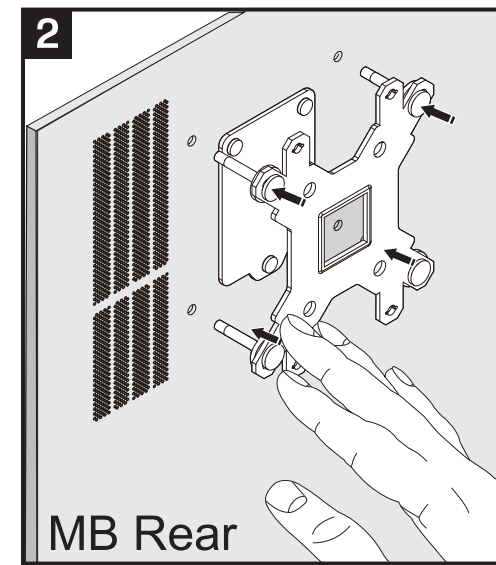
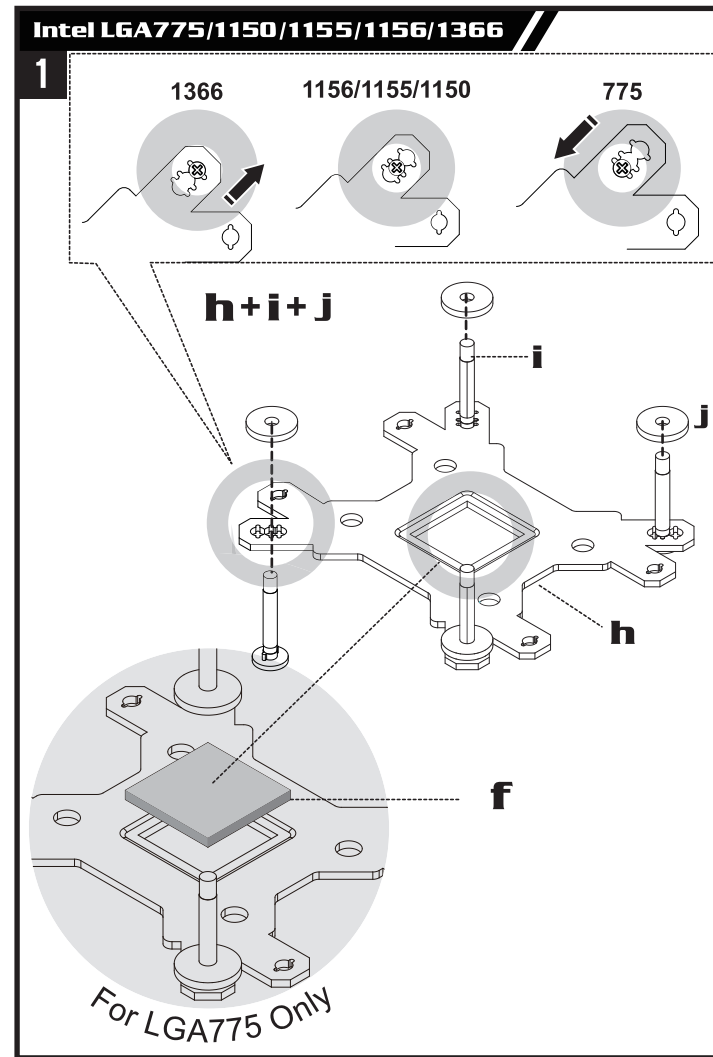
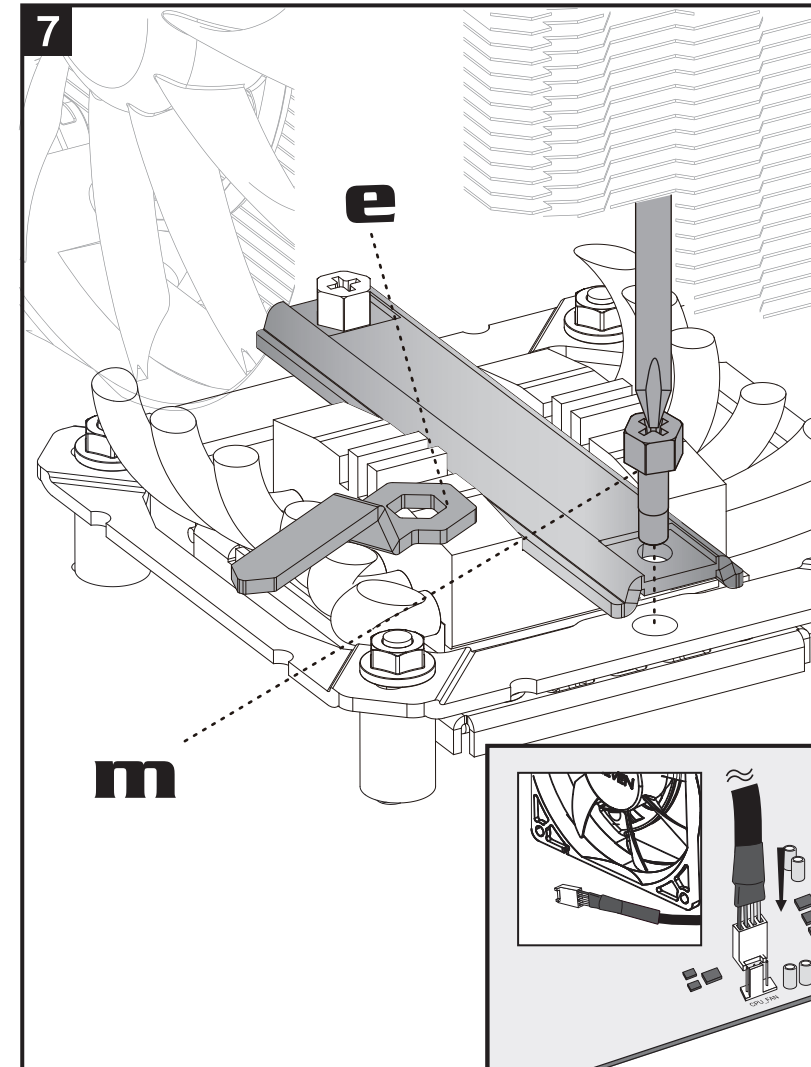
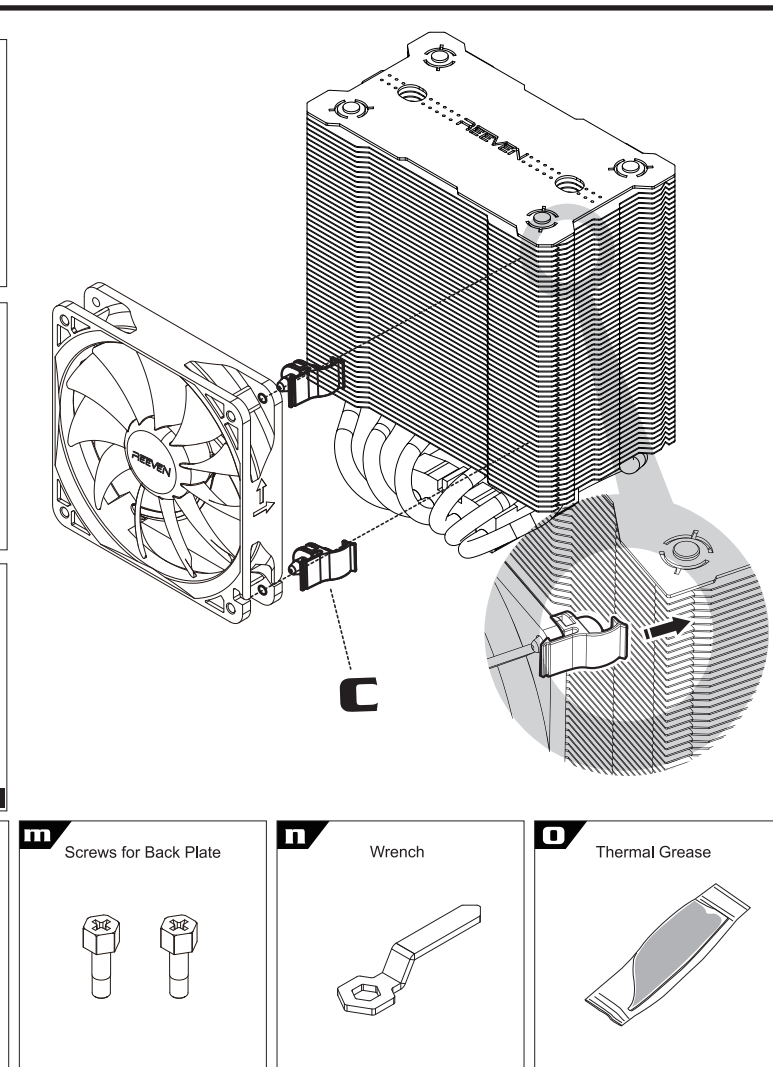
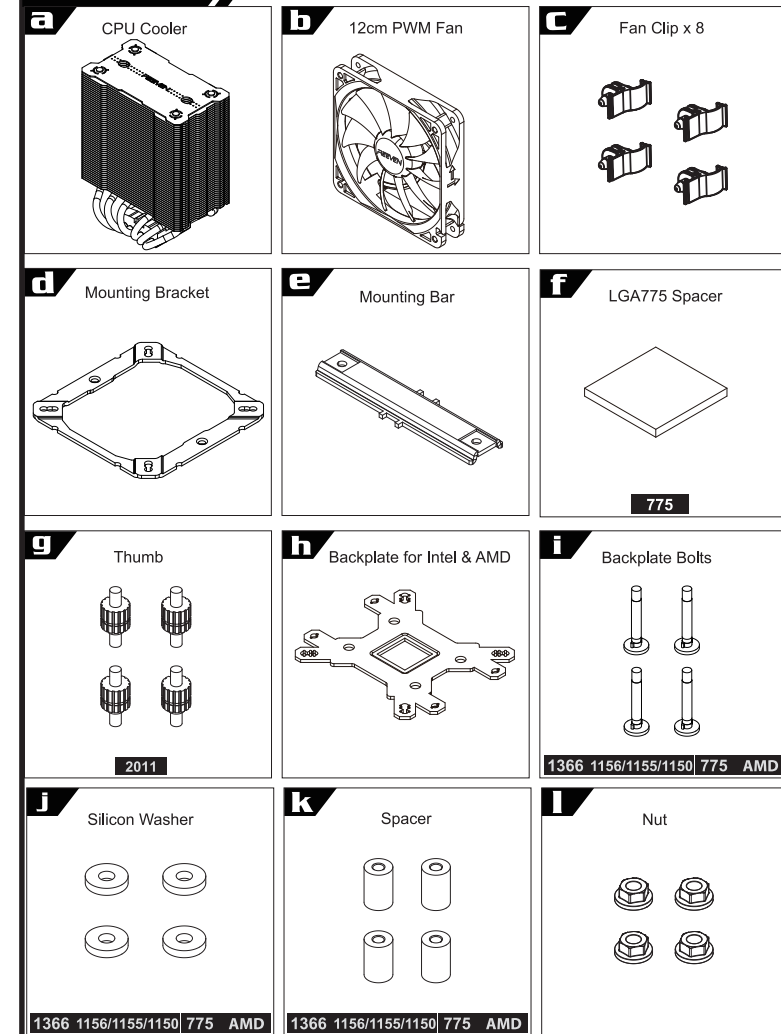


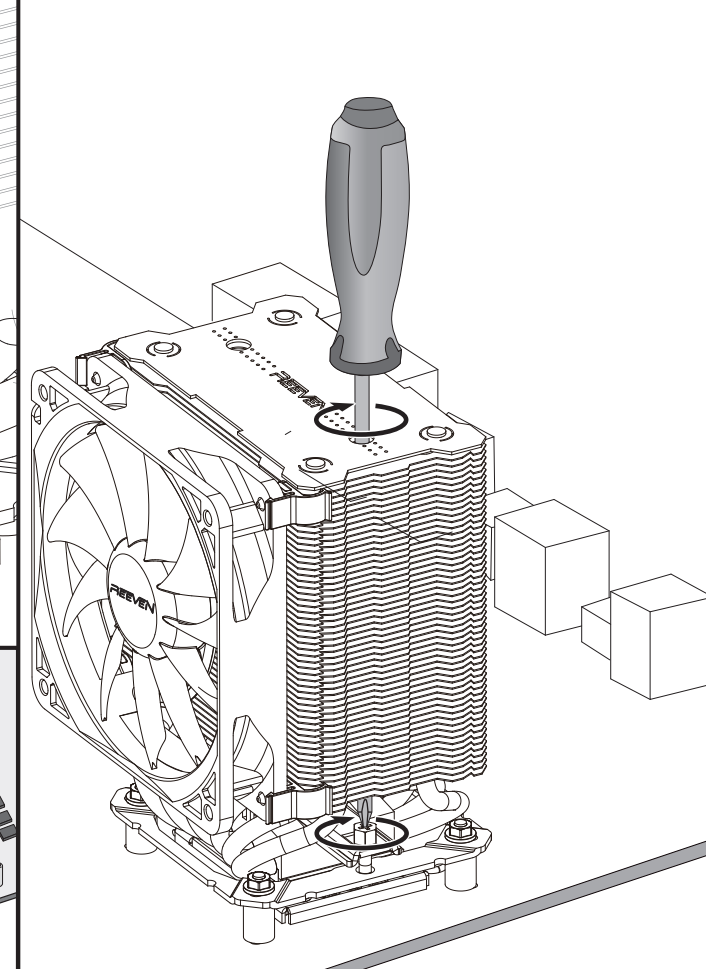
- 【取り扱い上の注意】**
- ・本製品及び付属部品の保管につきましては、小さなお子様の手の届かないところに保管をお願いします。
  - ・取り付けの際には、本製品及びPC内部の突起によるケガにご注意ください。



## Parts List



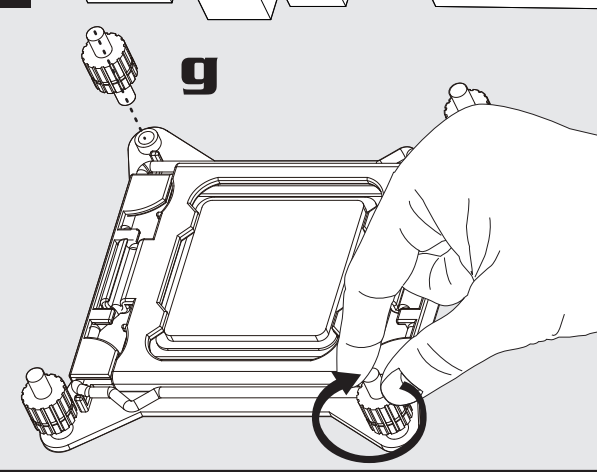
⊕ Screwdriver with length longer than 160mm  
長さ160mm以上のプラスドライバーをご用意ください。



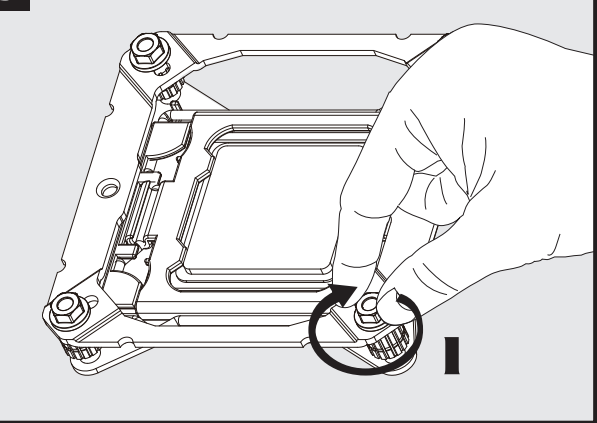


Intel LGA2011

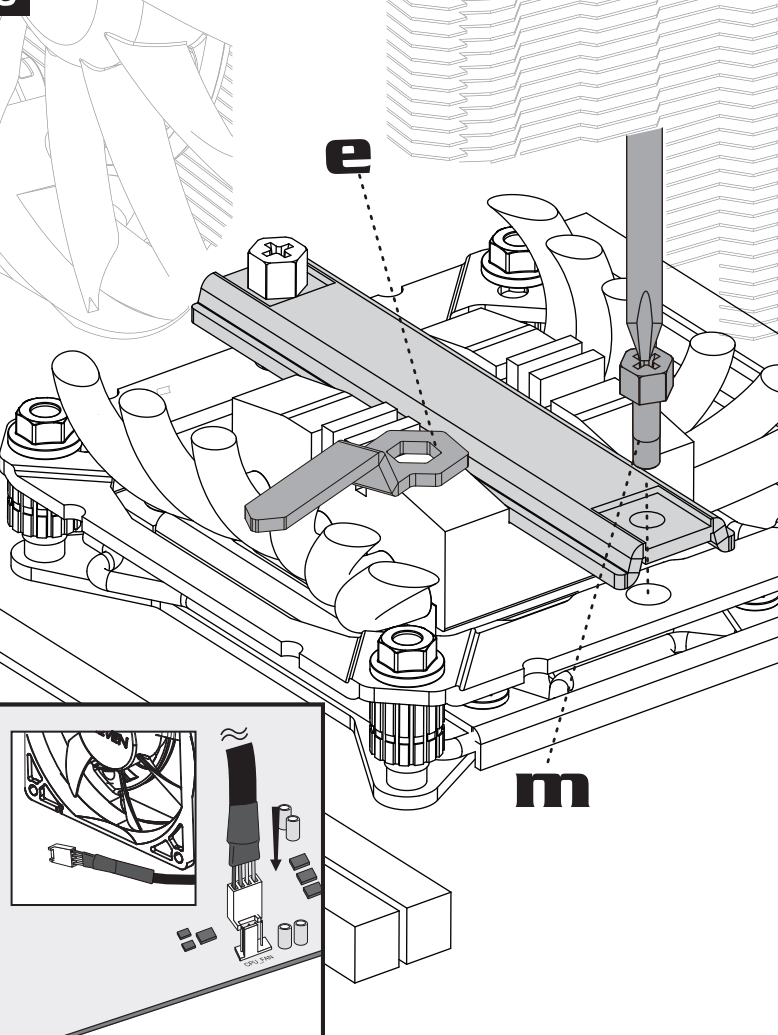
1



3

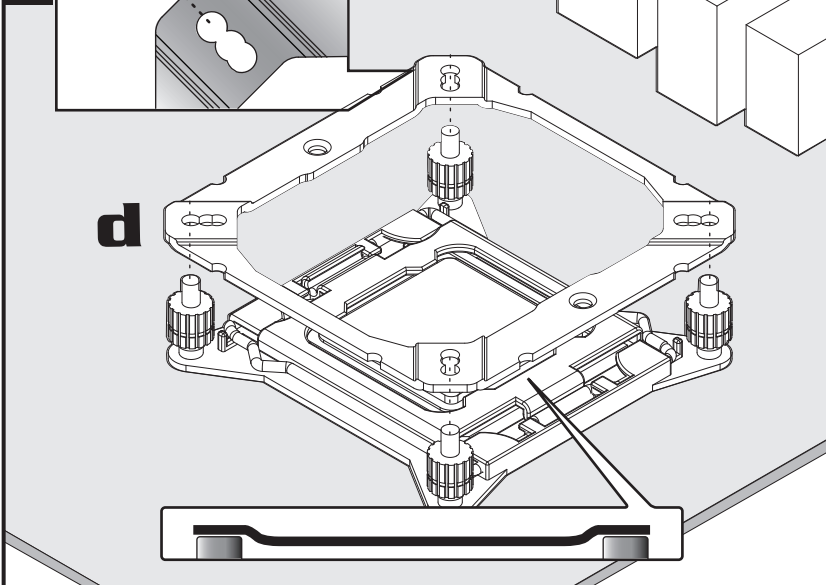


5

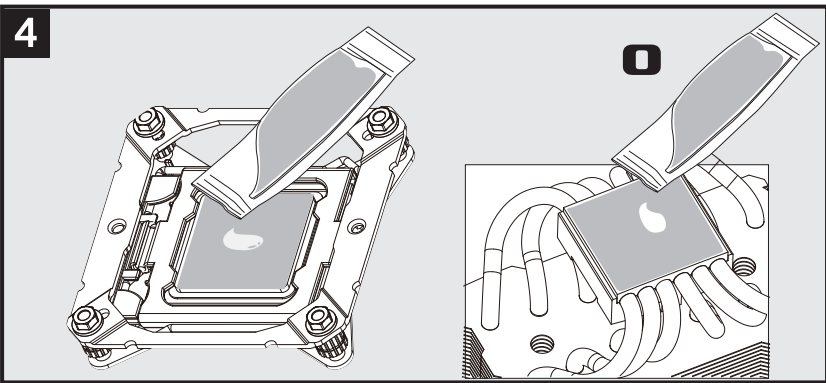


2

LGA 2011

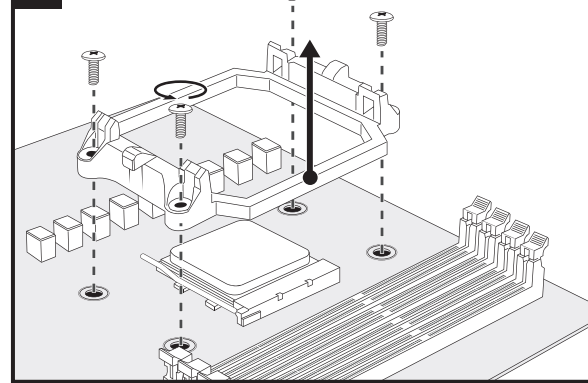


4

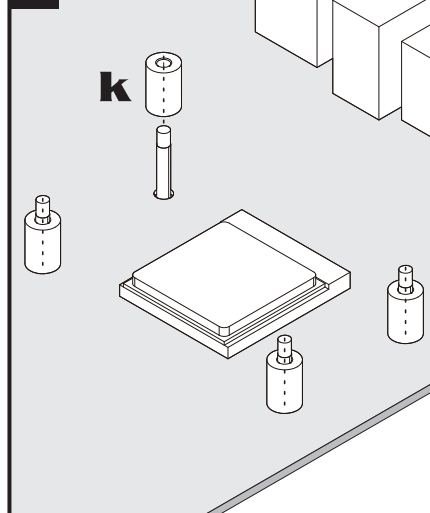


AMD Socket AM3(+)/AM2(+)/FM1/FM2

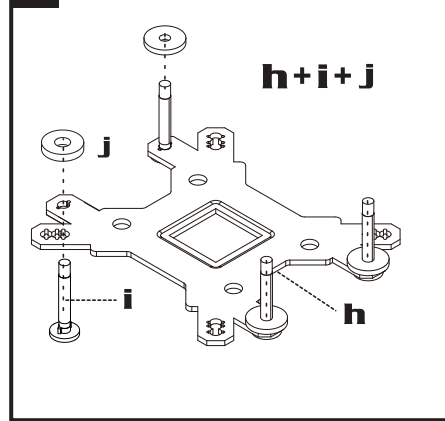
1



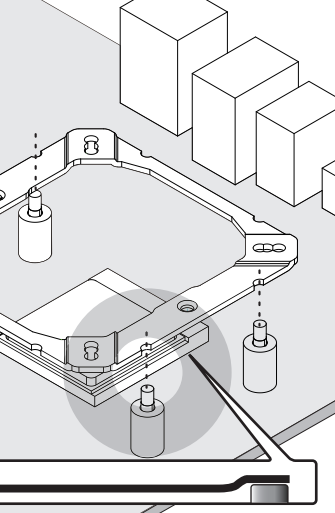
4



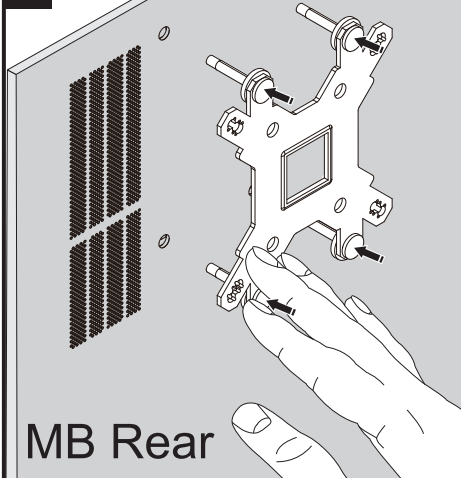
2



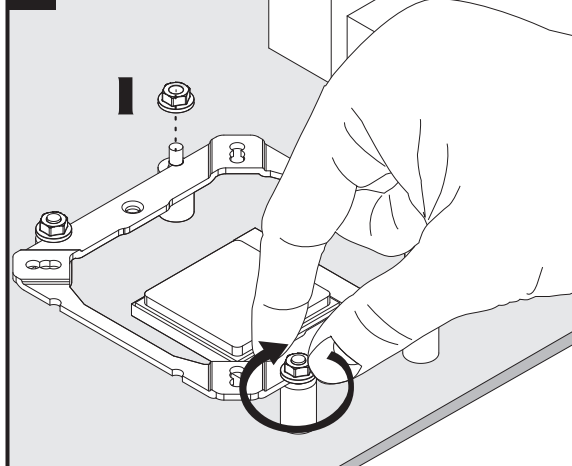
5



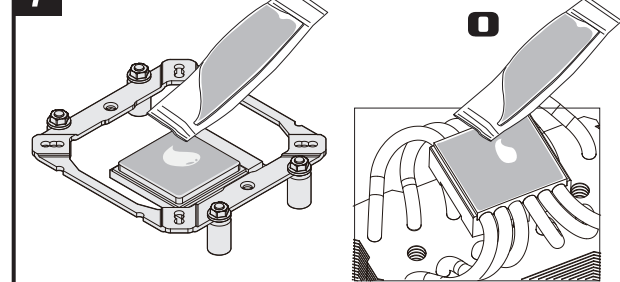
3



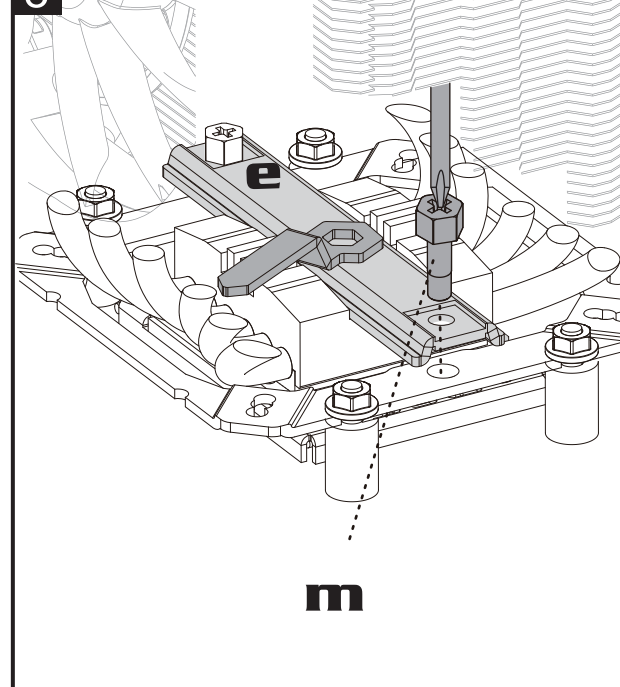
6



7



8



9

⊕ Screwdriver with length longer than 160mm  
長さ160mm以上のプラスドライバーをご用意ください。

